

STULZ the natural choice

CyberCool Pump&Transfer

Interface to central chilled water supply



CyberCool Pump&Transfer

Reliable chilled water supply for liquid cooled server racks

New server and processor technologies with selectively high heat loads of up to 35 kW per rack are increasingly resulting in the use of liquid cooled high density racks. Whether installed in closed-circuit air conditioned data

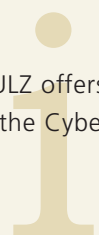
centres or equipment rooms without air conditioning: CyberCool Pump&Transfer is the ideal solution for connection to the existing building services central chilled water system.



Redundancy and high availability

The prerequisite for high-availability liquid cooling with CyberCool Pump&Transfer is an equally high-availability central supply of chilled water. If the building services management system only makes this

supply available for limited periods, STULZ offers an independent alternative in the form of the CyberCool indoor data chiller.





Safety through hydraulic separation

CyberCool Pump&Transfer is the ideal interface between the central chilled water supply with its large volumes of water and high pressures, and the highly sensitive information technology. It ensures hydraulic separation, and minimises the volume of water, the pressure and the risk of leakage. With CyberCool Pump&Transfer, you can make use of your existing central chilled water supply and adapt it to suit the requirements of your racks.

Easy assembly, cost-effective operation

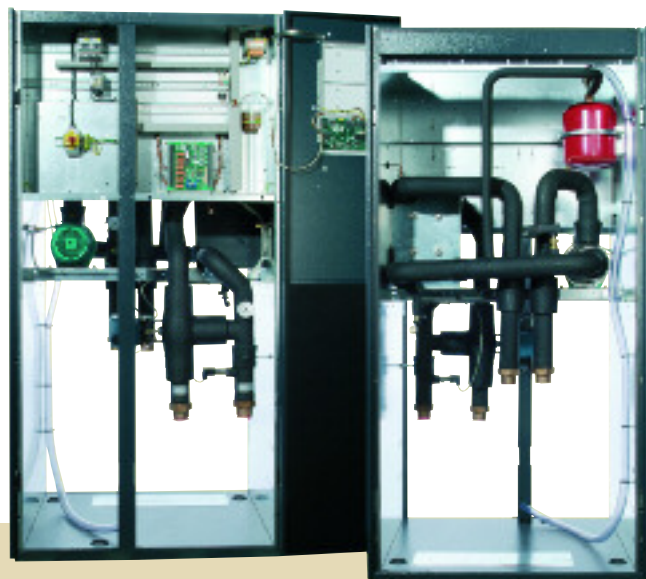
The modular and compact CyberCool Pump&Transfer requires minimal space and dispenses with the need for custom plantroom constructions. Thanks to its numerous connection possibilities, it can be adapted to suit each individual task and any local peculiarities, significantly reducing site assembly time. CyberCool Pump&Transfer functions with 100 % water and is up to 10 % more efficient than systems with water/glycol mixtures.

Central monitoring of controlled temperatures

In order to avoid condensation and corrosion, the temperature of the coolant water is held above dew point and adjusted to suit the requirements of the racks and maintained at a constant level. The integrated C6000 microprocessor monitors all functions and also processes signals from water monitoring systems. In addition, the C6000 enables CyberCool Pump&Transfer to be integrated with the central building services management (BMS) system.

The complete range from a single source

As one of the leading manufacturers of liquid cooling systems for air conditioning, STULZ offers you the complete range – from CyberCool indoor and outdoor chillers through CyberCool Pump&Transfer to liquid cooled CyberChill server racks. All units can be mutually combined and allow you to create an integrated 99.999% fail-safe solution providing redundancy and ensuring maximum critical IT system availability.



CyberCool Pump&Transfer

Technical data

Pump&Transfer		CPI 200 CW	CPI 400 CW	CPI 600 CW	CPI 800 CW	CPI1000 CW
Cooling capacity	kW	20	40	60	80	100
Primary circuit						
Volumetric flow	m³/h	3.8	7.6	11.6	15.2	19.0
Pressure drop	kPa	54	75	61	58	62
Secondary circuit						
Volumetric flow	m³/h	2.9	5.7	8.6	11.5	14.3
Pump						
Available pump pressure	kPa	246	242	224	244	253
Unit data						
Dimensions (HxWxD)	mm	1980 x 1000 x 890	1980 x 1000 x 890	1980 x 1000 x 890	1980 x 1000 x 890	1980 x 1000 x 890
Weight	kg	245	250	260	270	305

Pump&Transfer		CPI 200 CW2	CPI 400 CW2	CPI 600 CW2	CPI 800 CW2	CPI 1000 CW2
Cooling capacity	kW	2 x 20	2 x 40	2 x 60	2 x 80	2 x 100
Unit data						
Dimensions (HxWxD)	mm	1980 x 1000 x 890	1980 x 1000 x 890	1980 x 1000 x 890	1980 x 1000 x 890	1980 x 1000 x 890
Weight	kg	295	310	340	360	400

The technical data of the CW2 units is equivalent to the technical data for two CW units of the same model.

Design basis conditions for technical data

CPI ... CW and CW2		Primary circuit	Secondary circuit
Medium		30 % glycol	Water
Inlet temperature	°C	7	18
Outlet temperature	°C	12	12
Temperature constancy	K	±1	±1

All data applies at 400 V/3 ph/50 Hz.

STULZ the natural choice

www.stulz.com/global

STULZ HEADQUARTER

D STULZ GmbH
 Holsteiner Chaussee 283
 22457 Hamburg
 Sales Germany, Tel.: +49(40)55 85-306
 Sales International, Tel.: +49(40)55 85-269
 Fax: +49(40)55 85-308
 products@stulz.de

STULZ SUBSIDIARIES

AUS STULZ AUSTRALIA PTY LTD
 Unit 21, 287 Victoria Rd
 Rydalmere NSW 2116
 Tel.: +61(2)96 38 70 00 • Fax: +61(2)96 38 70 22
 sales@stulz.com.au

E STULZ ESPAÑA S.A.
 Calle Lluvia Nº 1
 28918 Leganés (Madrid)
 Tel.: +34(91)517 83 20 • Fax: +34(91)517 83 21
 info@stulz.es

F STULZ FRANCE S. A. R. L.
 107, Chemin de Ronde
 78290 Croissy-sur-Seine
 Tel.: +33(1)34 80 47 70 • Fax: +33(1)34 80 47 79
 info@stulz.fr

GB STULZ U. K. LTD.
 First Quarter • Blenheim Rd.
 Epsom • Surrey KT 19 9 QN
 Tel.: +44(1372)74 96 66 • Fax: +44(1372)73 94 44
 sales@stulz.co.uk

I STULZ S.P.A.
 Via Torricelli, 3
 37067 Valeggio sul Mincio (VR)
 Tel.: +39(045)633 16 00 • Fax: +39(045)633 16 35
 info@stulz.it

IN STULZ-CHSPL PVT. LTD.
 006, Jagruti Industrial Estate
 Mogul Lane, Mahim • Mumbai - 400 016
 Tel.: +91(22)56 66 94 46 • Fax: +91(22)56 66 94 48
 info@stulz.in

NL STULZ GROEP B. V.
 Industriezentrum Bovenkerk • Postbus 75
 1180 AB Amstelveen
 Tel.: +31(20)54 51 111 • Fax: +31(20)64 58 764
 stulz@stulz.nl

PL STULZ POLSKA SP. Z O.O.
 ul. Włodarzewska 69
 02 – 384 Warszawa
 Tel.: +48(22)883 30 80 • Fax: +48(22)824 26 78
 info@stulz.pl

USA STULZ AIR TECHNOLOGY SYSTEMS (SATS), INC.
 1572 Tilco Drive
 Frederick, MD 21704
 Tel.: +1(301)620 2033 • Fax: +1(301)662 5487
 info@stulz-ats.com

